

Ergonomic assessment along the entire production process and development of optimization measures

- Ergonomic assessment of approx. 300 workplaces in body shop, paint shop, assembly and logistics
- Identification of key strain factors in manufacturing of the Mercedes-Benz Sprinter
- Duration: April 2015 – July 2016
- Application of the ergonomic assessment methods EAB and Multipla used by Daimler Group
- Generation of mainly technical measures for sustainable reduction of critical strains
- Analysis of the potential for assessing and prioritizing ergonomic measures in terms of efficiency and feasibility
- Creation of a uniform data basis for further use; e.g. design of workplaces for employees with impaired abilities

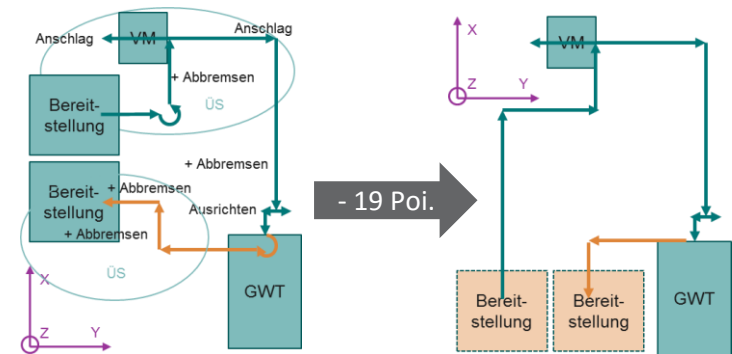


Fig. 1: Schematic display of improvement potentials

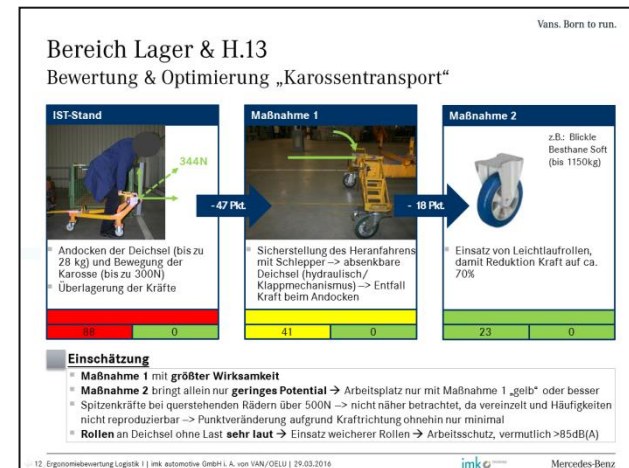


Fig. 2: Derivation of optimization steps with proof of potential